

**SCHOOL LEAVER**

# Prospectus



**ENDEAVOUR**  
College of  
Natural Health



**The highest degree of natural health**

Endeavour College of Natural Health acknowledges the Australian Aboriginal and Torres Strait Islander peoples as the first inhabitants of the nation and the Traditional Custodians of the lands where we live, learn and work. We pay our respects to ancestors and Elders, past, present and future. Endeavour College of Natural Health is committed to honouring Australian Aboriginal and Torres Strait Islander peoples' unique cultural and spiritual relationships to the land, waters and seas and their rich contribution to society.

## Contents

A message from our Director of Education	3
Why start your journey with Endeavour?	4
Which course is for you?	5
Campuses	6
Our libraries	8
Student life	9
Getting support as a student	10
Digital learning	11
Common new student questions	12
Endeavour Wellness Clinic	14
Bachelor Degrees	15
Higher Education Diplomas	20
Undergraduate Certificates	23
Vocational Education and Training (VET)	26
Introductory courses in natural health	29
Accreditation and professional recognition	31
Credit recognition	32
Scholarship opportunities	33
Fees and payment options	34





## A message from our Director of Education

Thank you for considering Endeavour College of Natural Health as a potential place to study your chosen career.

Endeavour College is the leader in natural health education, producing the experts that keep the world well – we are the best at it because it's all we do.

Endeavour College has campuses across Australia with a student body in excess of 5,000. With intimate classes, the open exchange of ideas is important and we encourage you all to learn from those around you. Whether you're studying one of our theory subjects through our state-of-the-art digital learning environment or attending a practical or clinical class on campus, the journey is entirely yours and we welcome all students to enjoy the College experience.

At Endeavour College, we teach what the world wants to feel. I know you will be impressed by the professionalism of the staff and the quality of their teaching as well as the support and guidance of our Student Services team. We are a national and international leader in the field of natural medicine with some of Australia's most respected lecturers teaching across all disciplines of study.

We specialise in clinical practice, so one of the greatest benefits of studying with Endeavour is the amount of actual hands-on, real-life experience you will gain as a student. The Endeavour Wellness Clinic is set up for you to be a practitioner and work your practical hours with paying clients in a supported and friendly environment, on campus.

Endeavour offers a unique opportunity to shape your individual specialisation and to work in collaboration with other areas of natural health within the same clinic. During your clinical practice, you will learn real business skills which will help you understand the nuances of running a business, which many of our graduates achieve after completing their courses.

An exciting time awaits you in the months and years ahead. Best wishes with the decisions you make now for your future. Turn your passion into your purpose.

### Dr Jenny Wilkinson

Director of Education

**The College fosters an atmosphere that is respectful, supportive and welcomes students from all demographics and cultural backgrounds. Here you'll find other caring and curious people, and develop a strong camaraderie among your peers.**

### Kangaroo Paw

Native to Australia, the kangaroo paw (or *Nollamara*, *Kurulbrang* or *Yonga Marra* in the local Nyoongar language) is known for its bright and vivacious flowers and has been used by Indigenous Australians as bush medicine for many thousands of years. Kangaroo paw can also be found in some beauty products due to its hydrating and skin renewing properties.



# Why start your journey with Endeavour?

## People power

We are the largest natural health college in the Southern Hemisphere and have been a natural health educator since 1975. You will learn from the natural health industry's best teachers, rub shoulders with some of its superstars, and no doubt discover like-minded people amongst your peers.

**18,000+ graduates  
and counting...**

## Direct entry

As an Institute of Higher Education, we offer a range of direct entry opportunities as part of our commitment to the value of student centricity. Previous study is also considered and you may be eligible for course credits into our higher education degrees or courses.

**A student-centric approach**

## Ongoing support

Everyone needs a little support on life's journey. At Endeavour, you will always receive the support you need to succeed from our Student Support and Academic teams.

**Support every step  
of the way**

## Career-focused

Whether you're wanting to open your own clinic, travel the world working with clients, create your own products, or anything in between, studying with us can help you reach those goals. We hold regular networking events, webinars and panels for students, and provide you extensive client and clinical experience at our public, on campus Endeavour Wellness Clinics.

**Your goals realised**

## Find your purpose

Turn your passion into a thriving career with real purpose. All you need to do is take the first step. If studying natural health has been something you've been considering, there is no better time than now.

**Turn your passion  
into your purpose**

**"My favourite subject by far was clinical practice, which you do many hours of in Endeavour's student clinic. I think Endeavour also taught me resilience, and when I graduated, I was confident that I could work in the industry."**

**Tia Miers**

Bachelor of Health Science (Naturopathy) graduate



## Which course is for you?

Remember, you can enrol directly in any of our courses. You can commence study in any month of the year, either online or at any of our six campuses across Australia.\*

Course	In brief	Years (FT / PT)	Clinical hours <sup>†</sup>	Campus offering	On campus	Online
Bachelor of Health Science (Acupuncture Therapies)	Balancing Qi for healing	3 / 6	600	• Adelaide • Brisbane • Gold Coast	• Melbourne • Perth • Sydney	Yes Selected subjects available online
Bachelor of Health Science (Chinese Medicine)	Restoring health through mind, body and spirit	4 / 8	998	• Adelaide • Brisbane • Gold Coast	• Melbourne • Perth • Sydney	Yes Selected subjects available online
Bachelor of Health Science (Naturopathy)	Harnessing the healing power of nature	4 / 8	651	• Adelaide • Brisbane • Gold Coast	• Melbourne • Perth • Sydney	Yes Selected subjects available online
Bachelor of Health Science (Nutritional and Dietetic Medicine)	Nourishing health food as medicine	3 / 6	468	• Adelaide • Brisbane • Gold Coast	• Melbourne • Perth • Sydney	Yes Selected subjects available online
Diploma of Health Science	Create a healthier and happier society	1 / 2	Non-clinical course	This course is offered in a fully virtual space, using online and livestreaming modes of delivery		No Yes
Diploma of Health Science (Chinese Remedial Massage)	Cultivating health through touch	1.5 / 3	228	• Adelaide • Brisbane • Gold Coast	• Melbourne • Perth • Sydney	Yes Selected subjects available online
HLT52021 Diploma of Remedial Massage	Improve movement, pain and performance	1 / 2	200 hours	• Adelaide • Brisbane • Gold Coast	• Melbourne • Perth • Sydney	Yes Selected subjects available online
HLT42021 Certificate IV in Massage Therapy	Relaxation massage for wellbeing	0.5 / 1	80 hours	• Adelaide • Brisbane • Gold Coast	• Melbourne • Perth • Sydney	Yes Selected subjects available online

\* International students please note – not all courses are available at all campuses for international enrolment. Please see the College's website for specific information for international students.

† Clinical hours listed are approximate and may vary depending on course electives chosen.

## Pay for your course with FEE-HELP

Did you know, all our higher education courses including our Diploma of Health Science and Diploma of Health Science (Chinese Remedial Massage) are FEE-HELP approved?

FEE-HELP is a government provided loan scheme that assists eligible fee paying students pay all or part of their tuition fees. You can find out more information by speaking to one of our friendly advisers.

Visit [Fees and Payment Options](#) or the Study Assist website directly.

## Locations

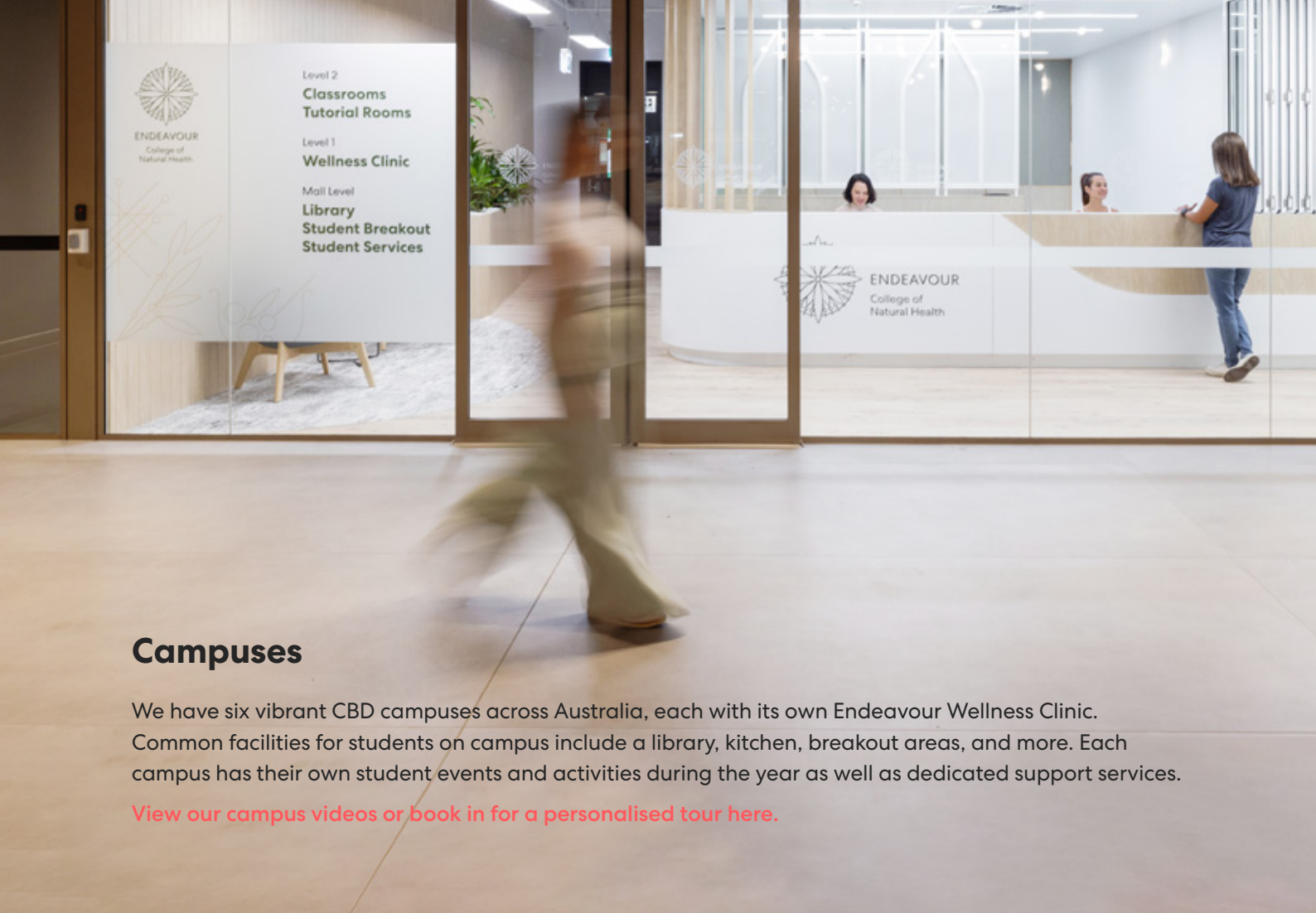
As the largest natural health college in the Southern Hemisphere by depth and breadth of course offerings, you will find Endeavour located in six major Australian cities. You can move between campuses as you study if you choose! Each campus is centrally located and well-served by public transport. We've embarked on a campus renovation initiative to offer re-designed student teaching, breakout and group learning spaces, digital learning hubs and modern teaching clinics. Our facilities vary at each campus but they include bright, modern classrooms, clinical practice rooms, libraries, cafes and inviting spaces to hang out and study.

**“Endeavour helped instil a confidence in me that made me realise, no matter what area of the wellness industry I was about to take my nutrition skills to, I would be just fine.”**



**Lani Finau**  
Bachelor of Health Science  
(Nutritional and Dietetic Medicine) graduate





## Campuses

We have six vibrant CBD campuses across Australia, each with its own Endeavour Wellness Clinic. Common facilities for students on campus include a library, kitchen, breakout areas, and more. Each campus has their own student events and activities during the year as well as dedicated support services.

[View our campus videos or book in for a personalised tour here.](#)



### Adelaide Campus *(Tarndanya)*

**88 Currie Street, Adelaide SA 5000**

Part of the iconic Powerplant building, our Adelaide campus is close to public transport, cafes, restaurants and Central Market. It features an extensive library, classrooms and laboratories, and on-site teaching clinic that's open to the public.

#### Adelaide fast facts

- Adelaide has a population of approximately 1.4 million people
- The Adelaide Central Market is the largest undercover fresh food market in the Southern Hemisphere
- It takes only 20 minutes to get to any point in the city



### Brisbane Campus *(Meanjin)*

**Level G, 1 & 2 Transport House, 230 Brunswick Street, Fortitude Valley QLD 4006**

Located in a brand-new space at Valley Metro, our Brisbane campus offers re-designed teaching, breakout, and group learning spaces, as well as a digital learning lab and bookstore. There are a wide range of cafes, transport, shops, and amenities nearby, making this campus an ultra-handly location.

#### Brisbane fast facts

- Brisbane is home to 2.1 million people
- It gets on average 283 days of sunshine a year
- Brisbane is the birthplace of the lamington



## Gold Coast Campus (Yugambah)

**Level 1 & 2, 121 Scarborough Street, Southport QLD 4215**

In the heart of Southport, our brand new Gold Coast campus is close to everything the Gold Coast has to offer – beaches, restaurants, cafes, and more. On campus you will find our Endeavour Wellness Clinic, classrooms and laboratories and library.

### Gold Coast fast facts

- Over half a million people live in the Gold Coast
- The Gold Coast boasts 57km of beautiful coastline
- The average sea water temperature is 22 °C year round



## Melbourne Campus (Naarm)

**Level 2, 368 Elizabeth Street, Melbourne VIC 3000**

Located in the heart of Melbourne's CBD and just a moment from public transport, this newly renovated campus is home to an extensive library, fit-for-purpose classroom and laboratory settings, student common areas and clinic.

### Melbourne fast facts

- Melbourne is Australia's second most populated city with a population of 4.5 million
- On an average weekday 928,000 people use the city
- The median age of an inner-city Melbournite is 28



## Perth Campus (Boorloo)

**170 Wellington Street, East Perth WA 6004**

Located just one kilometre from the city centre, our Perth campus is close to Wellington Square Park and public transport. We have an on-site library as well as teaching clinic, plus fit-for-purpose student common areas, kitchen facilities and learning spaces.

### Perth fast facts

- 2.4 million people visit Perth each year
- 60% of people get around without a car
- Perth is the sunniest city in the world!



## Sydney Campus (Gadigal)

**Level 7, 815/825 George Street, Haymarket NSW 2000**

Recently renovated, the Sydney campus provides students with group learning spaces, digital learning hubs, re-designed teaching areas as well as a whole floor dedicated to the Endeavour Wellness Clinic. It's located right across the road from Central train station and Railway Square bus stops and is within easy access of many restaurants, shops and facilities.

### Sydney fast facts

- Sydney has approximately five million residents
- George Street (the street our college is on) is the oldest street in Australia
- English, Mandarin, Thai and Cantonese are the main languages spoken in the City of Sydney

## Our libraries

On every campus you will find a physical library. And not just any standard library. Endeavour's libraries have recently outranked 17 other Australian universities, achieving an overall score of 87.1% in an independent survey in 2022.

**“The Endeavour library is very well run, and resourceful, and the staff couldn't be any more helpful. Online or on campus in person, always a pleasure.”** Gold Coast student

During campus hours our libraries are staffed by qualified librarians who are there to assist you. Make the library your second home on campus and go there for study support, wi-fi access and printing, assignment research and referencing, student computers, database access and more!

Not on campus? No problems! We also have a digital library complete with virtual librarian. Access eBooks, online resources, and help with databases and referencing all from your laptop.

Our digital library lets you:

- Ask questions and find answers through FAQs and the Virtual Librarian
- Find Referencing help and a copy of the “APA Referencing Guidelines”
- Search the Library catalogue and access e-books and online journal databases
- Book online one-2-one time with a librarian
- Book a study room online



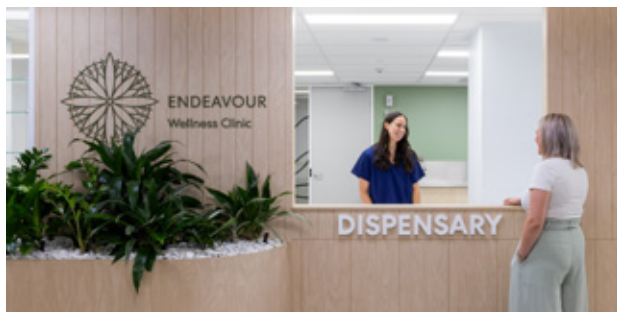
**“My top tip for students is to chat with our librarians – they are available on campus and online. You can book a consultation or walk in. Finding information can be overwhelming, so come and see us.”**

**Sophie Gow**  
National Librarian



## Student life

Life at Endeavour College isn't just about lectures, textbooks, and studying. We live and breathe natural health, and we want to give you the opportunity to do the same! To provide you with a rich and well-rounded experience, we offer a range of services and opportunities throughout your student journey.



### Endeavour Wellness Clinic

All students receive discounted treatments at Endeavour Wellness Clinic, along with 15% off dispensary and retail items. Treatments include Nutritional Medicine, Naturopathy, Acupuncture, and Massage. Students also receive two free treatments per calendar year. Treatment availability may vary in each clinic.

### Academics

Our academics are leaders in the natural health industry with years of experience and a passion for teaching the next generation of natural health professionals.



### Library

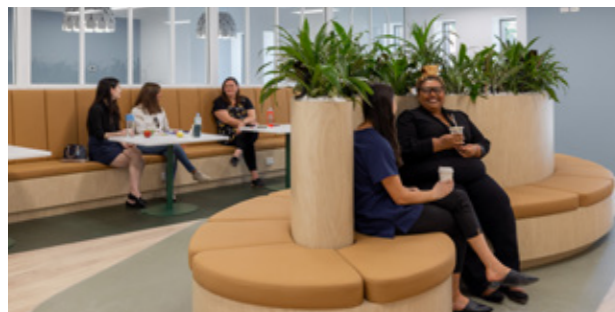
Find a range of natural health books available for you to borrow. Our libraries also have bookable rooms for you to meet and study in, general study spaces, and printing and copying facilities.

### Student support

As an Endeavour student, you will always have access to help and support. We offer face-to-face, online and over the phone support services which cater to individual student needs. On top of this students can access a 24/7 online study support platform which can be accessed anytime, anywhere, whenever you need it.

### Wi-Fi

With free and fast Wi-Fi, you can stay connected while on campus.



### Break out spaces

Take some time out and enjoy our student break out spaces. With kitchen facilities and comfortable seating, these spaces are great places to relax, spend time with fellow students or grab a snack in-between classes.

### Fit-for-purpose classrooms

We have a range of classrooms specifically designed for the kinds of learning you will be undertaking while on campus. These include laboratories, digital learning hubs, and practical classrooms – these spaces will help bring your learning to life!



### On-campus activities

Throughout the academic year, you'll have access to free events and activities (both on-campus and online). From orientation webinars and course progression sessions to yoga and skincare workshops, there's never a dull moment in the student events space! Endeavour students also have access to exclusive industry events, which are either free of charge or discounted.

### Bookstore and product discounts

We work with industry partners to bring you a range of product and service discounts. You also receive a discount at the Endeavour Bookstore – an online store where you can pick up many health and wellness items, clinic equipment and uniforms, learning aids, and more.

## Getting support as a student

Starting the next phase of your study life can be a little (or a lot) daunting. At Endeavour we provide as much support throughout your study journey.

### Who should I talk to for help?

You can book a consultation with any of our support teams online. Consultations include:

- › Student Services (general inquiries)
- › Student Success (course progression and re-enrolment support)
- › Student Wellbeing (Access and Equity program, wellbeing and study strategies and specialised support options for individual circumstances)
- › Academic Support (general study and academic support or subject specific questions)

### What sort of support services does Endeavour offer me as a student?

We offer easy access for you to participate in our Access and Equity Program, TalkCampus, Studiosity and Careers Service. Talk to Student Services about them or check out information on our website about how they work

### What are those services about?

#### TalkCampus app

Student life can be incredibly tough. Get instant and free support for your mental health any time of day or night through the TalkCampus app. At TalkCampus we're here for the moments when you just need a friend. Talk anonymously to students around the world going through the exact same struggles you are any time of day or night. This is a safe place where you can talk anonymously about anything and get support for your mental health and whatever is on your mind.

#### Access and Equity Program

The Access and Equity Program exists to:

- › Assist students with a disability, mental health or medical condition
- › Enable the equal participation of every student
- › Increase social inclusion
- › Advocate for individual student's rights

#### Studiosity

To support students in their studies, we provide personalised study help, anytime of day or night and even on weekends with the help of Studiosity. This is a free service for all Endeavour students and allows students to receive detailed, personalised feedback in less than 24 hours, or the opportunity to chat live with a Subject Specialist to work through a study problem right away.

#### Careers Service

Endeavour's Careers team assists students in identifying their values, career goals and the actions they need to take while studying to give them the best chance of achieving a successful career upon graduation. One-on-one consultations are available with a Careers Coordinator to discuss career planning and advice. Students also have access to the Endeavour Careers Jobs Board, Industry Events Board, educational careers webinars, business masterclasses and employment preparation resources.

For more information visit the [website](#).

**“From the moment I walked into my first class, Endeavour was such a supportive environment. I made some lifelong friends and learnt so much from the incredible lecturers.”**

#### Casey Wise

Bachelor of Health Science  
(Nutritional and Dietetic Medicine) graduate



## Digital learning

Enjoy the flexibility of learning online. We provide digital learning for theory classes which offer you:

- Personalised and adaptive learning
- Immersive digital learning tools
- The ability to communicate with your lecturers and classmates
- Diverse learning modules including videos, interactive tutorials, forums, quizzes and journals
- A visually rich and seamless user experience
- Industry-focused, practical learning
- The ability to learn on your laptop and smartphone



**“Teaching has changed over the years. We needed to find more innovative teaching methods than the classroom. Today, we encourage students to criticise and ask questions because this produces reflective practitioners and lifelong learners. There will always be a need for practical, hands-on learning, but we must pair this with interactive online learning.”**

**Dr Shuai Zheng**  
Head of Department – Chinese Medicine





## Common new student questions

Get the answers to the questions not always asked, but often wondered about.

### What should I bring on day one?

Bring your books, stationery items and lunch, or money to buy your food and drink. You can access filtered water on campus and use the student kitchen and breakout areas, including refrigerators and microwaves.

### Can I use my own device on campus?

Yes, absolutely. Free Wi-Fi is available at every campus. The password will change from time to time and you only need to check with Student Services at Reception or with your Library personnel to get the password. You can access your course materials and online subjects via Endeavour's Learning Management System (LMS) on your smartphone, tablet or laptop whether you are on campus, at home, or on the bus or train.

### How will I be taught?

Your classes might be for theory, practical or clinic subjects. There will always be a variety of teaching methods and learning resources used.

### Do the teachers read off the slides?

Reading off slides is not a recognised teaching method. Endeavour utilises PowerPoint slides to ensure nationally consistent delivery of knowledge and skills. These PowerPoint slides make great revision material prior to your assessments and will be uploaded onto your Learning Management System for you to review. Slides are a baseline and your industry-experienced lecturer or supervisor will add to this material from their great store of experience. Just remember there is always a feedback button on your Student Portal for you to communicate any concerns you might have.

### Can I eat in class?

You may eat non-messy snacks in class. Drink containers that are not likely to break if knocked over or dropped are recommended.

### Do I need to bring my textbooks?

Bring them on day one and discuss with your lecturer if you need to bring them each time or if they are to be used primarily for work outside of class eg, library or at home.

### How many people in my class?

The number of students in your class will vary based on the type of class – practical, theory or clinic – the time of your class and optimal teaching numbers that are recommended by our senior academic team.

### Where do I go on day one?

You can look up your room numbers prior to your first day on campus via the Student Portal and go straight to that room or there will be room schedules of classes at reception and other prime locations throughout the College.

### Do I need to attend all my classes?

It is recommended that you attend all classes, as you are here to learn and become a subject matter expert and professional in your chosen discipline. Within the information about your subjects on the LMS you can access the relevant Subject Outlines. The Subject Outlines will clearly state if there are attendance requirements for that subject.



## Where do I hand in assignments?

Most assignments are uploaded soft copy onto the LMS. Some however are handed in to the lecturer personally. You will be advised which are not required to be uploaded to the LMS.

## Who do I tell if I am running late – do I need to advise anyone?

If you are late for a clinic subject you must phone in and advise of your new arrival time. You may be required to attend a clinic make up session. Discuss with your supervisor immediately when you arrive. Specific details around this process are found in the Clinic Handbook. Some other practical and theory subjects also have an attendance requirement. Discuss with your lecturer when you arrive as a nonattendance on the class roll may affect your overall subject grade.

## Is there parking on campus?

There is parking nearby to all Endeavour campuses, often with a special rate for our students depending on the offers of the owners of car parks. Some street parking may be available. All campuses are located with good access to public transport. Ask your Student Services team about bike rack possibilities on your campus.

## Can I shower on campus if I ride a bike?

Please ask your local Student Services team about the availability of showers on site. Some campus facilities have access and others don't depending on what has been provided within the campus building. You might find showers nearby also at gyms and pools.

## What type of footwear is appropriate?

We don't stipulate types of footwear, but ask that you be mindful as to your and others' safety and the environs of the campus when choosing your footwear for College. When you are in Clinic and dealing with clients there will be an expectation as to how you present yourself and your Clinic Manager and supervisors will discuss this with you during clinic specific orientations.

## Anything else I should consider as needs for my course?

When you review your Subject Outlines you will find a list of what you need to provide and bring with you to class. It is important that you carefully prepare for these classes, usually called practical classes. For example, practical classes in Acupuncture may require you to bring towels to class so that you are able to participate. Quantities and sizes are listed on your Subject Outlines. Some classes will require you bring a stethoscope. Items like this make a difference to your learning outcomes in the sessions when they are used.

## How will I know if my FEE-HELP is complete?

Once you have a student number you are able to request a FEE HELP application via your student portal. You will then receive an email with a passkey to your student email address asking you to finalise your FEE HELP application. Once both these steps are completed you will receive your final confirmation of the process. You will need to ensure you have a Tax File number and a USI (Unique Student Identifier) to complete the application form.

Once your FEE HELP is complete your fees will be automatically allocated a FEE-HELP loan at census date, each intake. It is your responsibility to ensure that you have completed your application for FEE-HELP prior to your first census date, as discussed during your enrolment with the College. Incomplete applications or non-submission of proof of citizenship will result in fees needing to be paid upfront.

### Eucalyptus

Eucalyptus is an iconic Australian native with many medicinal properties. As well as being used to decrease pain, promote relaxation, and relieve cold symptoms, it can also soothe irritated skin, repel insects, and freshen your breath.



## Endeavour Wellness Clinic

Real life experience practising in Endeavour Wellness Clinic is one of the greatest benefits of choosing to study with us.

Located on all campuses, the Endeavour Wellness Clinic is open to the public and receives fee-paying clients. If your course requires clinical hours, you will treat clients in a safe, supportive and professional environment, supervised by qualified practitioners. You can apply your academic knowledge, learn practical skills while treating clients and gain an understanding on the principles of running your own clinic in the future.

Clinical practice provides you with the opportunity to work with peers across different disciplines of natural medicine. Endeavour Wellness Clinics treat more than 1,000 clients with a variety of backgrounds and conditions every week.

🔍 [endeavourclinic.com.au](https://endeavourclinic.com.au)

### Clinical hours per course

- Bachelor of Health Science (Naturopathy):  
565 hours
- Bachelor of Health Science  
(Nutritional and Dietetic Medicine):  
384 hours
- Bachelor of Health Science (Acupuncture Therapies):  
432 hours
- Bachelor of Health Science (Chinese Medicine):  
904 hours
- Diploma of Health Science (Chinese Remedial Massage):  
192 hours
- HLT52021 Diploma of Remedial Massage:  
Minimum 200 hours

**“I think it’s incredible to get that clinical experience while you’re still in college. From my previous career, I know how important it is to know your industry and connect with other people in it.”**

**Claudia Milbourne**  
Bachelor of Health Science (Naturopathy) student





# Bachelor Degrees

Our Health Science Bachelor Degrees combine theory and practical experience across a range of specialist areas including Naturopathy, Nutrition, Acupuncture and Chinese medicine. All degrees are FEE-HELP approved for eligible domestic students.



## Golden Wattle

Australia's national flower, the striking golden wattle has been used for millennia by Indigenous Australians for food, medicine, dyes, and perfumes. The perfume of some wattles may help to improve moods and calm the spirit.

# Bachelor of Health Science (Acupuncture Therapies)

Acupuncture is a branch of Chinese medicine that stimulates specific points on the body to regulate the flow of Qi (vital energy) to restore health and balance the functions of the body, mind and spirit.

Acupuncture therapies combine Chinese medicine theory (philosophy and principles) with Chinese manual therapy practices including acupuncture, moxibustion, medical Qi Gong, and Chinese remedial massage (Tui Na), supported by Chinese dietary therapy and prepared Chinese herbs.

## Course duration

- 3 years full time
- Part-time study options available
- From 12 contact hours per week (part-time)
- 600+ hours student practitioner experience

## Course delivery

The Bachelor of Health Science (Acupuncture Therapies) is offered in mixed mode, with a combination of online, blended, live-streamed and on campus subjects.

## Entry requirements

- **Direct entry** with no ATAR requirements
- To gain entry to an accredited Bachelor of Health Science degree at Endeavour College, applicants must satisfy the general requirements and other entry requirements by type of background – full entry requirement details are available on the Endeavour website.

## Where can I study?

Available to study at all six CBD campuses.

## Career opportunities

- Acupuncturists may practice independently as a sole trader or provide treatment in a multidisciplinary setting.
- Acupuncturists often work alongside other allied health practitioners such as medical doctors, physiotherapists, osteopaths, chiropractors, and naturopaths.

- Practitioners may choose to focus on specific areas of interest such as women's health, sports medicine, men's health, chronic disease, or other areas.
- Graduates are eligible to articulate into the Bachelor of Health Science (Chinese Medicine) with up to 92 credit points of advanced standing, as well as master's degree programs in a variety of related areas.

## Professional registration

Graduates must apply for registration with the Chinese Medicine Board of Australia (CMBA) if they wish to use professional titles and practise as a Chinese medicine practitioner in Australia. This course is designed to meet the CMBA accreditation requirements in the division of Acupuncturist.

Information regarding registration standards may be viewed [here](#).

## Association recognition

CMBA registrants may apply for membership with the following associations:

- Australian Acupuncture and Chinese Medicine Association Ltd (AACMA)
- Australian Natural Therapists Association (ANTA)
- Australian Traditional-Medicine Society (ATMS)
- Chinese Medicine & Acupuncture Society of Australia (CMASA)
- Federation of Chinese Medicine and Acupuncture Societies of Australia Ltd (FCMA)

**“At Endeavour, I witnessed different styles of acupuncture and got plenty of clinical experience, which gives you the confidence to practice in a way that’s true to yourself.”**



**Nicholas Beasley**  
Bachelor of Health Science  
(Acupuncture) graduate





# Bachelor of Health Science (Chinese Medicine)

Chinese medicine is a whole medical system that seeks to balance the functions of the body, mind and spirit and restore health. Chinese medicine combines theory (philosophies and principles) and practices including acupuncture, moxibustion, medical Qi Gong, Chinese remedial massage (Tui Na), Chinese herbal prescribing and dispensing, and Chinese dietary therapy.

## Course duration

- 4 years full time
- Part-time study options available
- From 12 contact hours per week (part-time)
- 998+ hours student practitioner experience

## Course delivery

The Bachelor of Health Science (Chinese Medicine) is offered in mixed mode, with a combination of online, blended, live-streamed and on campus subjects.

## Entry requirements

- **Direct entry** with no ATAR requirements
- To gain entry to an accredited Bachelor of Health Science degree at Endeavour College, applicants must satisfy the general requirements and other entry requirements by type of background – full entry requirement details are available on the Endeavour website.

## Where can I study?

Available to study at all six CBD campuses.

## Career opportunities

- Chinese Medicine practitioners may practice independently as a sole trader or provide treatment in a multidisciplinary setting.
- Chinese Medicine practitioners often work alongside other allied health practitioners such as medical doctors, physiotherapists, osteopaths, chiropractors, and naturopaths.

- Practitioners may choose to focus on specific areas of interest such as women's health, sports medicine, men's health, chronic disease, or other areas.
- Graduates may be eligible for master's degree programs in a variety of related areas.

## Professional registration

Graduates must apply for registration with the Chinese Medicine Board of Australia (CMBA) if they wish to use professional titles and practise as a Chinese medicine practitioner in Australia. This course is designed to meet the CMBA accreditation requirements in the divisions of Acupuncturist, Chinese Herbal Medicine Practitioner and Chinese Herbal Dispenser.

Information regarding registration standards may be viewed [here](#).

## Association recognition

CMBA registrants may apply for membership with the following associations:

- Australian Acupuncture and Chinese Medicine Association Ltd (AACMA)
- Australian Natural Therapists Association (ANTA)
- Australian Traditional-Medicine Society (ATMS)
- Chinese Medicine & Acupuncture Society of Australia (CMASA)
- Federation of Chinese Medicine and Acupuncture Societies of Australia Ltd (FCMA)

**“The lecturers are all practitioners themselves, and their love for the medicine shines through. It's cool to be exposed to their different viewpoints and approaches – it helps us define how we want to practise.”**



**Alf Zollo**  
Bachelor of Health Science  
(Acupuncture) student



# Bachelor of Health Science (Naturopathy)

Naturopathy is a whole medical system combining an array of natural therapies to support healing and maintain health. Naturopaths aim to treat the underlying causes of illness and disease. Students experience a holistic learning environment, broadening their studies across biological sciences to understand the human body and its functions. The core principle of “healing through nature” guides the naturopath’s use of nutrition, dietary counselling, herbal medicine, manual therapies, flower essences, lifestyle education and homeopathy.

## Course duration

- 4 years full time
- Part-time study options available
- From 12 contact hours per week (part-time)
- 650+ hours student practitioner experience

## Course delivery

The Bachelor of Health Science (Naturopathy) is offered in mixed mode, with a combination of online, blended, live-streamed and on campus subjects.

## Entry requirements

- **Direct entry** with no ATAR requirements
- To gain entry to an accredited Bachelor of Health Science degree at Endeavour College, applicants must satisfy the general requirements and other entry requirements by type of background – full entry requirement details are available on the Endeavour website.

## Where can I study?

Available to study at all six CBD campuses (1st year fully online).

## Career opportunities

- Naturopaths may practice independently in their own clinic.
- Work alongside other allied health professionals such as medical doctors, physiotherapists, osteopaths, and acupuncturists.
- Choose to specialise in a particular area of interest such as women’s health, children’s health, chronic disease, autoimmune diseases, environmental medicine and more.
- Naturopaths regularly appear in the media as subject matter experts, produce content and work with brands to develop products.
- Graduates may be eligible to pursue post-graduate programs and education roles.

## Association recognition

Graduates may apply for membership with the following associations:

- Naturopaths and Herbalists Association of Australia (NHAA)
- Australian Natural Therapists Association (ANTA)
- Australian Traditional Medicine Society (ATMS)
- Australian Naturopathic Practitioners Association (ANPA)
- Australian Register of Naturopaths and Herbalists (ARONAH)

**“Health is the foundation to beautiful, fulfilling lives – it gives us the freedom to do wonderful things.”**



**Aphrodite Bogias**  
Bachelor of Health Science  
(Naturopathy) graduate



# Bachelor of Health Science (Nutritional and Dietetic Medicine)\*

Clinical nutritionists integrate traditional food wisdom and current evidence to motivate individuals and communities to eat well and live healthier lives.

Disease prevention is approached and managed through a multidimensional lens. Nutrient adequacy, food quality, dietary behaviours and lifestyle are assessed to develop individualised Nutrition Care Plans. Nutritional and Dietetic Medicine studies broaden during the degree to include nutritional biochemistry, weight management, clinical nutrition, dietary planning, sports nutrition, nutritional physiology research and public health nutrition.

## Course duration

- 3 years full time
- Part-time study options available
- From 12 contact hours per week (part-time)
- 460+ hours student practitioner experience

## Course delivery

The Bachelor of Health Science (Nutritional and Dietetic Medicine) is offered in mixed mode, with a combination of online, blended, live-streamed and on campus subjects.

## Entry requirements

- **Direct entry** with no ATAR requirements
- To gain entry to an accredited Bachelor of Health Science degree at Endeavour College, applicants must satisfy the general requirements and other entry requirements by type of background – full entry requirement details are available on the Endeavour website.

## Where can I study?

Available to study at all six CBD campuses (1st year fully online).

## Career opportunities

- Clinical nutritionists may practice independently in their own clinic.
- Work alongside other allied health professionals such as medical doctors, physiotherapists, osteopaths, and fitness professionals.
- Upon graduation you may also pursue a career in population or corporate health, media and content creation, food and product development and more.
- Graduates may be eligible to pursue post-graduate programs and education roles.

## Professional recognition

Graduates may apply for membership with the following associations:

- Australian Natural Therapists Association (ANTA)
- Australian Traditional-Medicine Society (ATMS)
- The Complementary Medicine Association (CMA)
- The Nutrition Society of Australia (NSA)

\* Please note: This degree does not meet the professional accreditation requirements of the Dietitian's Association of Australia (DAA) for graduates to practice as an Accredited Practising Dietitian (APD).

**“Studying nutrition was a wonderful investment – I made great friends and learnt so much.”**



**Maddy Bento**  
Bachelor of Health Science  
(Nutritional and Dietetic Medicine) student





# Higher Education Diplomas

A higher education diploma is the perfect entry qualification towards a career in natural health. Our higher education diplomas are structured to provide you with future study pathways and career opportunities across Nutrition, Naturopathy, Complementary Medicine, and Chinese Medicine. And they're FEE-HELP approved!



## Lemon Myrtle

The native lemon myrtle is high in antioxidants, vitamin E, calcium, zinc, and magnesium. It is commonly used in teas, essential oils or as a flavour ingredient. This fantastic plant is also known to have antibacterial and anti-fungal properties.



# Diploma of Health Science

Contribute to a healthier and happier society with Endeavour's Diploma of Health Science. In addition to gaining foundational knowledge of biological and social sciences, our one-year full time (two years part time) course gives you the opportunity to gain an introduction to various areas of complementary medicine through interdisciplinary electives including Naturopathy and Nutrition.

Upon graduation, this Higher Education Diploma opens the doors to further study in health science degrees or roles in allied health or complementary medicine environments. From owning your own business to being a part of community health project teams, the career outcomes of this course are full of exciting possibilities.

## Course duration

- 1 year full time
- Part-time study options available
- From 12 contact hours per week

## Course delivery

This course is offered in a fully virtual space, using only online and livestreaming modes of delivery.

## Entry requirements:

- **Direct entry** with no ATAR requirements
- To gain entry to an accredited higher education diploma course at Endeavour College, applicants must satisfy the general requirements and other entry requirements by type of background – full entry requirement details are available on the Endeavour website.

## Where can I study?

This course is available to study fully online.

## Career opportunities

- Work on project teams in community health, local and federal government or even in community gardens.
- Develop recipes and products for your own brand or for local business. This could include developing your own products such as herbal teas, healthy meal packs, café menus and beauty.
- Work in specialised health food stores, organic food sales, pharmacy retail and nutrition sales.
- Create digital content through social media channels, blog writing and video development.
- Undergo further studies in allied health science careers including naturopathy, nutrition and dietetics, acupuncture, complementary medicine and other allied health fields.

**“Learning online removed the travel stress and surprisingly brought me closer to my peers.”**



**Amelia Hetherington**  
Bachelor of Health Science  
(Naturopathy) graduate



# Diploma of Health Science (Chinese Remedial Massage)

Chinese Remedial Massage utilises a range of manual therapy techniques developed within Chinese medicine to assess and support conditions commonly experienced within the community.

Techniques including tui na (Chinese remedial massage), acupressure, moxibustion, cupping, gua sha, topical herbal applications and medical Qi Gong are utilised to holistically support clients across the lifespan with special emphasis on clinical and musculoskeletal conditions.

## Course duration

- 1.5 years full time
- Part-time study options available
- From 12 contact hours per week
- 228+ hours student practitioner experience

## Course delivery

The Diploma of Health Science (Chinese Remedial Massage) is offered in mixed mode, with a combination of online, blended, live-streamed and on campus subjects.

## Entry requirements

- **Direct entry** with no ATAR requirements
- To gain entry to an accredited higher education diploma course at Endeavour College, applicants must satisfy the general requirements and other entry requirements by type of background – full entry requirement details are available on the Endeavour website.

## Where can I study?

Available to study at all six CBD campuses.

## Career opportunities

- Chinese remedial massage practitioners may practice independently as a sole trader or provide treatment in a multidisciplinary setting.
- Chinese remedial massage practitioners often work alongside other allied health practitioners such as acupuncturists, Chinese herbalists, medical doctors, physiotherapists, osteopaths, chiropractors, and naturopaths.
- Practitioners may choose to focus on particular areas of interest such as sports medicine, musculoskeletal health, massage or retreat centres, health maintenance, or holistic care.
- Graduates are eligible to articulate into the Bachelor of Health Science (Acupuncture Therapies) or Bachelor of Health Science (Chinese Medicine) with up to 34 credit points of advanced standing. Graduates may also articulate into other health qualifications in a variety of related areas.

## Association recognition

Graduates may apply for membership with the following associations:

- Australian Acupuncture and Chinese Medicine Association Ltd (AACMA)
- Australian Natural Therapists Association (ANTA)
- Australian Traditional-Medicine Society (ATMS)
- Chinese Medicine & Acupuncture Society of Australia (CMASA)

**“With Chinese medicine, I love that I can see the results straight away. People would walk out of the clinic feeling better than when they walked in. I learned so much from my clinic supervisors and fellow students during that time.”**

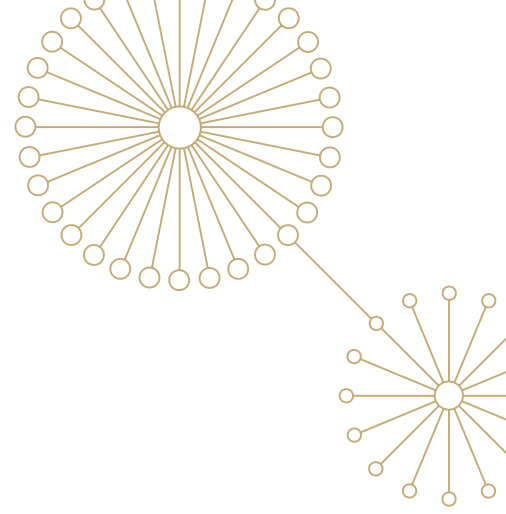


**Zarah Adaniel**  
Bachelor of Health Science  
(Acupuncture) graduate



# Undergraduate Certificates

Our Undergraduate Certificates allow you to gain a higher education qualification in natural health. Each course contains subjects taken directly from our Bachelor of Health Science degrees. Course delivery is provided in a fully virtual space, allowing flexibility of study in both time and location. Our Undergraduate Certificates FEE-HELP approved!



## Quandong

This outback native fruit is one of the most versatile bush foods in Australia and is a fantastic source of vitamin E, folate, potassium, zinc, iron, magnesium, and calcium. Sweet and tangy, this fruit can be enjoyed raw or stewed and even used as a pie filling.

## Undergraduate Certificate in Building Health Through Nutrition

The Undergraduate Certificate in Building Health Through Nutrition allows students to obtain a comprehensive understanding of human nutrition and introduces students to food-based science, including food spoilage, food additives, and natural toxins.

The certificate helps students understand how food components interact with the body's biochemistry to how this applies in managing immunity or maintaining a healthy weight throughout one's lifespan. Entry into this certificate assumes prior knowledge of human biology and biochemistry.

### Course duration

- 6 months full time
- 1 year part time
- From 9 hours per week (part-time)

### Entry requirements

- **Direct entry** with no ATAR requirements
- For entry into this certificate, applicants must hold a qualification at a minimum level of Certificate IV in a health, allied health, or related field (e.g. Fitness) and have some experience working in that field.

### Where can I study?

This course is available to study fully online.

### Learning outcomes

- Add nutritional medicine knowledge and skills to use in your own professional practice
- Develop a deep understanding of nutritional needs across the human lifespan
- Learn basic communication skills essential for higher education studies and client relationship management
- Gain critical thinking, organisational, and digital literacy skills

## Undergraduate Certificate in History and Philosophy of Complementary Medicine

The Undergraduate Certificate in History and Philosophy of Complementary Medicine is a perfect qualification to introduce you to the historical underpinnings and cultural background of some of the oldest health fields.

### Course duration

- 6 months full time
- 1 year part time
- From 9 hours per week (part-time)

### Entry requirements

- **Direct entry** with no ATAR requirements
- To gain entry to an accredited undergraduate course at Endeavour College, applicants must satisfy the general requirements and other entry requirements by type of background – full entry requirement details are available on the Endeavour website.

### Learning outcomes

- Be exposed to a wide range of complementary therapies
- Explore the history of healing and integration of complementary medicine, naturopathic principles and philosophy, foundations of Chinese medicine, musculoskeletal therapies as well as the cultural, ethical and social dimensions of nutrition
- Learn basic communication skills essential for higher education studies and client relationship management

### Where can I study?

This course is available to study fully online.





## Undergraduate Certificate in Lifestyle Coaching

Improve your emotional intelligence, self-confidence, and understanding of wellness to coach others to lead healthier and happier lives.

### Course duration

- 6 months full time
- 1 year part time
- From 9 hours per week (part-time)

### Entry requirements

- **Direct entry** with no ATAR requirements
- To gain entry to an accredited undergraduate course at Endeavour College, applicants must satisfy the general requirements and other entry requirements by type of background – full entry requirement details are available on the Endeavour website.

### Where can I study?

This course is available to study fully online.

### Learning outcomes

- Develop a deep understanding of mindfulness, wellness, nutrition and physical practices
- Understand the human stress response and its effect on human health and wellness
- Learn the practical skills for enhancing wellness and wellbeing, using an evidence-based approach
- Be exposed to the fundamentals of human nutritional science, including the biochemical and physiological functions of individual macro- and micro- nutrients, the importance of nutrients in normal cell function, energy balance and metabolism
- Deep dive into the historical foundations that underlie the contemporary development of mindfulness as a method for achieving wellbeing
- Learn to appreciate the importance of understanding the full potential of mindfulness practices, and its application, in both self-care practices and the care of others

## Undergraduate Certificate in Human Biology

With the Undergraduate Certificate in Human Biology, you can gain a comprehensive understanding of human biology and anatomy and develop the critical thinking skills required for study in higher education.

### Course duration

- 6 months full time
- 1 year part time
- From 9 hours per week (part-time)

### Entry requirements

- **Direct entry** with no ATAR requirements
- To gain entry to an accredited undergraduate course at Endeavour College, applicants must satisfy the general requirements and other entry requirements by type of background – full entry requirement details are available on the Endeavour website.

### Where can I study?

This course is available to study fully online.

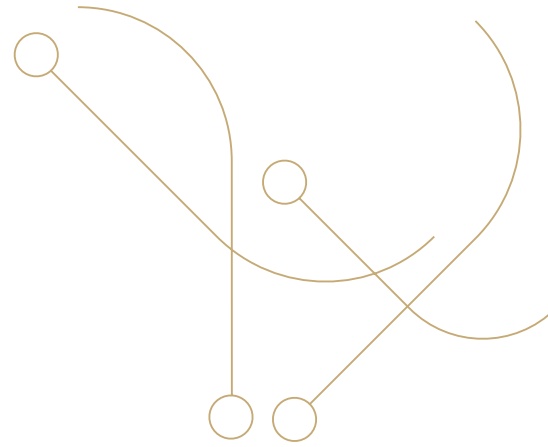
### Learning outcomes

- Be able to directly pathway into Endeavour's Health Science degrees or use it to earn credits towards another medical, nursing, or allied health qualification
- Understand the role of the modern complementary health care practitioner has within the wider health care system
- Develop a comprehensive understanding of human anatomy, physiology and the history of health perspectives around the world
- Explore the range of clinical research and research methods and become familiar with research literature



# Vocational Education and Training (VET)

Gain practical, hands-on knowledge with our Vocational Education and Training courses. We offer two VET massage courses which can be completed in a year or less.



## Finger Lime

Used by Indigenous Australians for centuries, finger limes provide many health benefits. Studies have shown that the citric acid content in finger limes can act as an antibacterial agent which can treat wounds and ulcers. It's high in vitamin C which can help boost immunity as well as aid in collagen formation for healthy skin. On top of this, finger limes contain vitamin E – an antioxidant which protects our cells from damage.



# HLT52021 Diploma of Remedial Massage

Improve your clients' movement, pain management, injury prevention, performance, and recovery through Endeavour's HLT52021 Diploma of Remedial Massage. This course enables you to register to become a registered health provider and provides valuable skills toward running your own practice.

## Course duration

- 1 year full time
- Part-time study options available
- From 12 contact hours per week

## Course delivery

This course is offered in a fully virtual space, using only online and livestreaming modes of delivery.

## Entry requirements:

- **Direct entry** with no ATAR requirements
- To gain entry to an accredited vocational course at Endeavour College, applicants must satisfy the general requirements and other entry requirements by type of background – full entry requirement details are available on the Endeavour website.

## Where can I study?

Available to study in Adelaide and Sydney only.

## Career opportunities

- Start your own business
- Work within health retreats and spas
- Become a sole trader in a multidisciplinary practice
- Work with other healthcare professionals or beauty therapists
- Provide massage services to elite athletes
- Work in corporate health

## Association recognition

Graduates may apply for membership with the following associations:

- Australian Natural Therapists Association (ANTA)
- Massage & Myotherapy Australia (MMA)





## HLT42021 Certificate IV in Massage Therapy

Improve your clients' movement, circulation, and mental and emotional wellbeing through Endeavour's HLT42021 Certificate IV in Massage Therapy. This course enables you to become a qualified relaxation massage therapist. Our course provides valuable skills toward running your own practice or sets you on the pathway to becoming an accredited remedial massage therapist.

You will gain a wealth of theoretical knowledge and practical experience that will put you in good stead when you complete your course. Our HLT42021 Certificate IV in Massage Therapy opens the door to a wide range of career options – both Australia-wide and globally.

### Course duration

- 6 months full time: 24 contact hours per week
- 1 year part time: 12 contact hours per week

### Course delivery

This course is offered in a fully virtual space, using only online and livestreaming modes of delivery.

### Entry requirements:

- **Direct entry** with no ATAR requirements
- To gain entry to an accredited vocational course at Endeavour College, applicants must satisfy the general requirements and other entry requirements by type of background – full entry requirement details are available on the Endeavour website.

### Where can I study?

Available to study in Adelaide and Sydney only.

### Career opportunities

- Start your own business
- Work within health retreats, cruise liners and spas
- Become a sole trader in a multidisciplinary practice
- Work with other healthcare professionals or beauty therapists

**“One of the greatest challenges when you finish any qualification is whether your education is going to reflect what is expected of you. Endeavour does set you up to the highest standard in that regard.”**

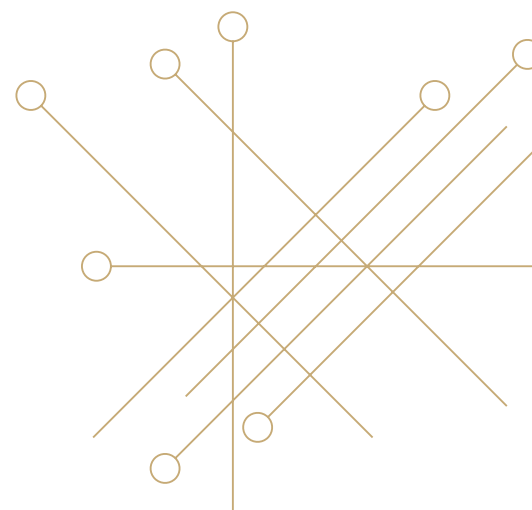


**Chris Parker**  
HLT52015 Diploma of  
Remedial Massage graduate



# Introductory courses in natural health

Dip your toe in the water. Turn your interest into knowledge with Endeavour Short Courses.



## Lilly Pilly

---

Described by some as a superfood, lilly pilly is high in vitamin C and fruit acids which have many skincare benefits. These include anti-aging and anti-inflammatory benefits as well as improving collagen production and skin cell rejuvenation.

## Endeavour Short Courses

Whether you're looking to improve your own or your family's nutrition, mental health and wellbeing or want to undertake professional development, there's an Endeavour Short Course for you. We have courses about gut health, nutrition essentials, wellness coaching, women's health and so much more – so level up your living today with Endeavour Short Courses. Plus, you can study from anywhere in the world!

### Online learning

Endeavour is a pioneer in personalised and adaptive online learning platforms. All you need to study online is an internet connection on your computer, tablet or phone. Learn from anywhere, in your own time, and at your own pace.

When studying a Short Course with us, all of your learning materials will be accessible online. The platform is clean, simple, and easy to navigate – you can even save where you're up to, exit and return to it later; ideal for stop and start learners!

Interactive learning, activities, podcasts, videos, extra resources and more – the experience has been designed to mould to individual learning styles. Expert videos have been embedded into the courses to unpack key concepts and theories. Courses include self reflective journal exercises to keep you on track with goals and achievements.

🔍 [endeavourshortcourses.edu.au](https://endeavourshortcourses.edu.au)

### Our Short Courses

Our range of Short Courses span four key areas that we believe contribute to a fulfilling and well-rounded lifestyle: Nutrition, Mental Health and Wellbeing, Natural Health, and Business Essentials. The aim of these courses is to empower you with knowledge and practical skills that will contribute to your quality of life. The content is relevant, applicable, and designed by experts from the higher education field.

### Ongoing professional education

On top of this, many of our short courses allow you to receive Continuing Professional Education (CPE) points upon completion. You can use CPE points towards your membership of professional bodies and to show you're actively investing in life-long learning. In addition, you'll receive a Credly badge which you can add to your resume and share on your socials.

## What's to love about Endeavour Short Courses?

Endeavour Short Courses are developed by subject matter experts, offered entirely online, and delivered via our state-of-the-art digital learning platform. These bite-sized courses are ideal for anyone passionate about learning and pursuing knowledge in the natural health field.



Developed by  
industry experts



Start anytime



Complete in  
4 – 35 hours



A wide range of  
relevant and practical  
short courses



Receive a Credly badge  
when you complete  
a course



Entirely online



Course access for  
12 months



Engaging and visual  
learning platform



## Accreditation and professional recognition

We develop our courses with professional associations, external academics, clinicians and graduates to ensure your qualifications are recognised by key industry bodies. We regularly review all our courses to make sure they meet our students' and industry's needs.

Each of our bachelor degrees courses are formally assessed and accredited by the Australian government national regulator for Higher Education, the Tertiary Education Quality Standards Agency (TEQSA).

Once you graduate you are eligible for membership with professional associations relevant to your field of study, such as Complementary Medicine Association, The Nutrition Society of Australia, and the Australian Natural Therapists Association.

Our Bachelor of Health Science (Acupuncture Therapies) and Bachelor of Health Science (Chinese Medicine) are currently being accredited by AHPRA.

We educate first-rate professionals, perfectly positioned to service the thriving health and wellness sector.



## Credit recognition

If you have studied or are studying a qualification, you may be eligible for advanced standing towards Endeavour's qualifications. Our approach to Credit Recognition or Recognition of Prior Learning (RPL) aims to support access to lifelong learning, promote student success, and enhance graduate mobility between institutions, sectors, states, and countries.

### Calculate your credit into an Endeavour course

Endeavour College of Natural Health is one of the very few institutions in Australia that maps individual subjects into each of its courses. The mapping process is complex and detailed but, when filtered through the Articulation Abacus, the result is a meticulously calculated pathway that truly matches learning for learning and sets students up for academic success. Use our specially designed Articulation Abacus to calculate your possible educational credits.

Access the  
Articulation  
Abacus [HERE](#)

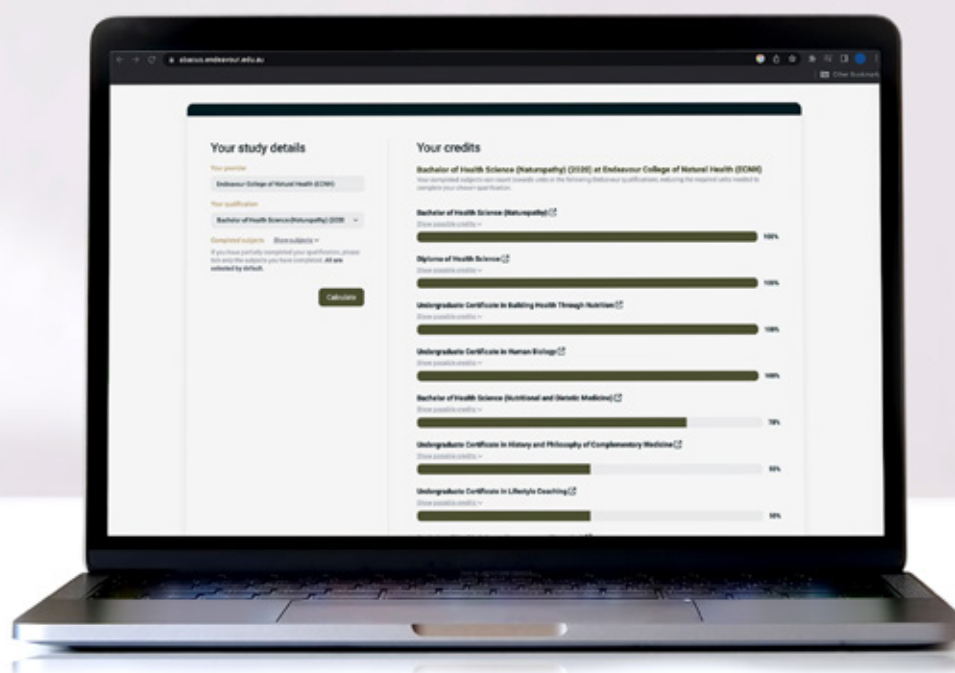
### Types of Learning for RPL

Assessing the potential for credit will consider the range of learning types and comparability of previous learning to the requested subject/s or unit/s. These include:

- › **Formal Learning:**  
Formal Learning includes learning achieved as part of a recognised AQF level course or qualification (or its equivalent in the case of international study).
- › **Non-formal Learning:**  
Non-formal Learning includes learning achieved as part of a non-AQF course or qualification.
- › **Informal Learning:**  
Informal Learning includes professional or paraprofessional experience which is not part of a course or qualification.

### Applying for RPL

Please get in touch with our Admissions Team who can check your eligibility to study and provide further guidance.



# Scholarship opportunities

Do you excel at biological and social sciences, have demonstrated leadership qualities, and have strong communication skills?

We offer scholarship opportunities to school leavers who are interested in pursuing studies in natural health. These scholarships are open to recent secondary school leavers and gap year students aged from 17 – 19 years old (at the time of application) all across Australia. The available scholarships include:

- Academic Achiever Scholarship
- Full-Time Study Scholarship
- Vocational Re-skilling Scholarship
- Aboriginal and Torres Strait Islander Scholarships

## Academic Achiever Scholarship

Our Academic Achiever Scholarships offer financial support for school leavers who have graduated in 2022 and 2023 to undertake our Diploma of Health Science. Scholarship recipients will receive tuition support for the duration of this course which equates to four credit points worth of study per semester. Upon completion, students can pathway into further studies at Endeavour or other higher education providers.

## Full-Time Study Scholarship

The Full-Time Study Scholarship offers financial support for school leavers to undertake our Bachelor of Health Science (Naturopathy) or Bachelor of Health Science (Nutritional and Dietetic Medicine). Scholarship recipients will receive tuition support for the duration of the course which equates to four credit points worth of study per semester.

## Vocational Re-skilling Scholarship

The Vocational Re-skilling Scholarship offers financial support for school leavers to undertake our HLT42021 Certificate IV Massage Therapy or our HLT52021 Diploma of Remedial Massage. Scholarship recipients will receive 40% of their tuition fees.

## Aboriginal and Torres Strait Islander Scholarships

Our Aboriginal and Torres Strait Islander Scholarships offer financial support to recent secondary school leavers and gap year students that identify as Aboriginal and/or Torres Strait Islander. Our Commencement Scholarship is offered nationally to students who are committed to studying the Diploma of Health Science full-time, while our Textbook Pack Scholarship offers reimbursement of first-semester textbook costs for students enrolling in the course.

These scholarships present an exciting opportunity for recipients who will have the opportunity to act as College ambassadors throughout their journey with the College, supporting the next generation of natural health students.

Visit the **Scholarships** session for further information and terms & conditions.

**Employment prospects for complementary health professionals is expected to grow very strongly over the next five years and is likely to reach 8,000 workers by 2026.**

Source: Jobs and Skills Australia

## Samphire

A good source of calcium and iron, and high in vitamin A, B2 and B15, samphire can most often be found near salty water sources. It's packed with essential nutrients like magnesium, potassium and sodium, and may aid digestion, boost the immune system, and improve bone health.





## Fees and payment options

We provide flexible and affordable payment options so that you can spend less time focusing on fees and more time focusing on your study and future career.

### FEE-HELP

FEE-HELP is a loan that can help you to pay all or part of your tuition fees. Australian citizens, New Zealand citizens or holders of permanent Humanitarian Visas may be eligible for FEE-HELP. Chat with our friendly Admissions Advisers by calling 1300 462 887 who will be able to talk to you about this option in more detail.

### Self-funding

You may prefer to self-fund your study. If you choose this option, you will be invoiced at the commencement of your first teaching period and required to pay for your subjects prior to census date. To make it easier for you, payment can simply be made via our student portal.

### Scholarships

Endeavour College is proud to offer a number of scholarships to support and recognise high achievers, those with diverse backgrounds, or students who require financial assistance.

[Discover our available scholarships here.](#)

## Ready to take the next step? If a future in natural health is calling, we are here to help!

### Chat with us

Our Admissions Advisers are available to talk you through your course options and study load, as well as answer any questions you may have about enrolling to study. Call 1300 462 887.

### On campus & Virtual Open Days

Join us at one of our open days where you can tour your local campus, meet the academics, explore the clinic and chat with our admissions team.

Can't make it to a campus? Our virtual open days make it easy for you to explore study life from the comfort of your own home or office.

### Book a campus tour

We'd love to show you around! If you'd like to check out our campus, simply arrange a private tour by calling 1300 462 887.

### Enjoy a treatment in our Wellness Clinic

Experience learning in action at our Endeavour Wellness Clinic – available at all our campuses. We provide a range of natural health treatments at affordable prices.

### Apply now

Decision made? [Jump online](#) to apply today and one of our Admissions Advisers will be in touch!

### Bottlebrush

This striking plant known for its bright red blooms is a rich source of essential nutrients including potassium, manganese, and selenium. Traditionally, bottlebrush was used to treat kidney ailments, bleeding, ulcers, and tuberculosis. Studies have shown that bottlebrush's antioxidant and antihyperglycemic presence may act as a therapeutic agent in diabetes.



**Your Passion. Your Purpose.**  
**Apply direct today**



🔍 [endeavour.edu.au](https://endeavour.edu.au)

📞 1300 462 887

✉️ [info@endeavour.edu.au](mailto:info@endeavour.edu.au)



Australian College of Natural Medicine Pty Ltd (ACNM) trading as Endeavour College of Natural Health and Endeavour Wellness Clinic  
IHE: PRV12070 | CRICOS: 00231G | RTO: 31489